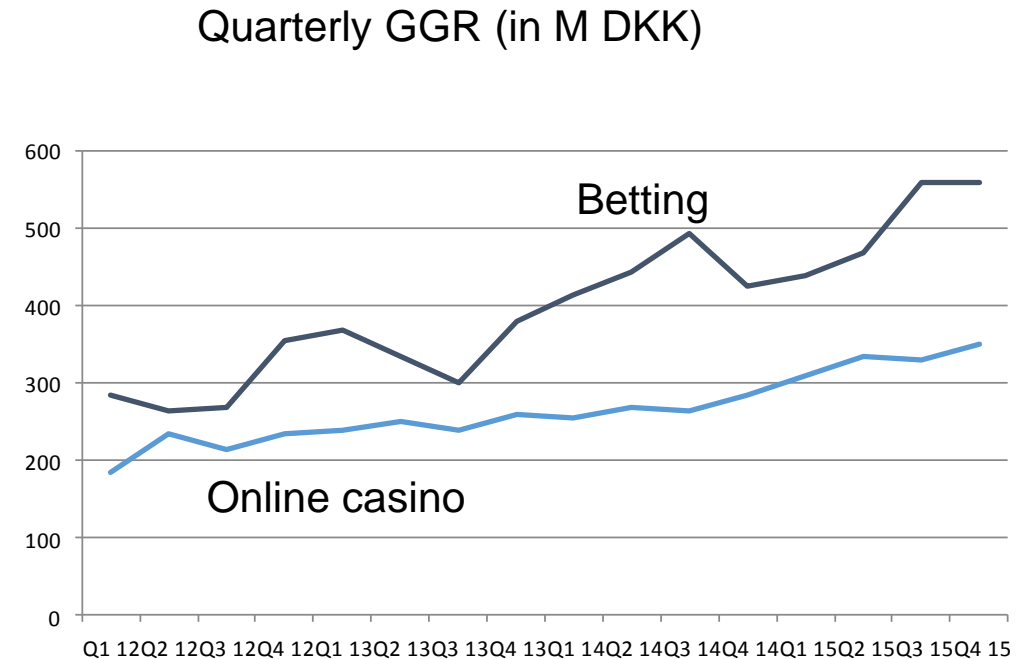


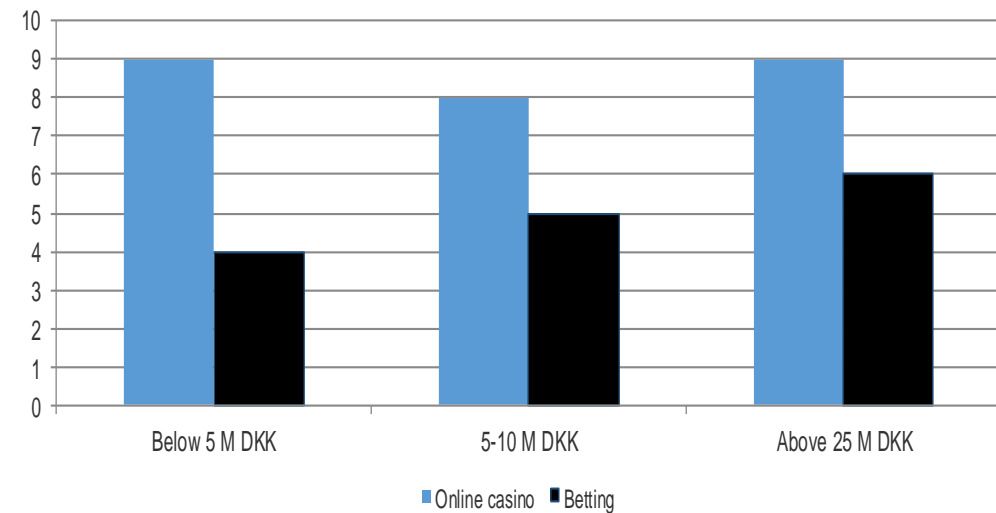
# GGR for betting and online casino

- In Q4, the GGR for online casino grew nearly 25 per cent compared to the same quarter in 2014. This is the fourth consecutive quarter in which the GGR is more than 20 per cent higher than the same quarter last year. Before 2015, the quarterly growth rate compared to the same quarter last year was usually around 10 per cent.
- In Q4, the GGR for betting increased more than 30 per cent compared to the same quarter in 2014. This is significantly higher than the three first quarters of 2015 where the growth rate was 5-10 per cent.



# The licence holders

- In the beginning of january 2016, 28 licence holders held 15 licences for betting and 26 licences for online casinos.
- 9 licences for online casinos og 4 licences for betting had a GGR below 5 M DKK in 2015.
- 9 licences for online casinos og 6 licences for betting reached a GGR above 25 M DKK in 2014.



# Payout ratio

## Payout ratio in Q4 2015

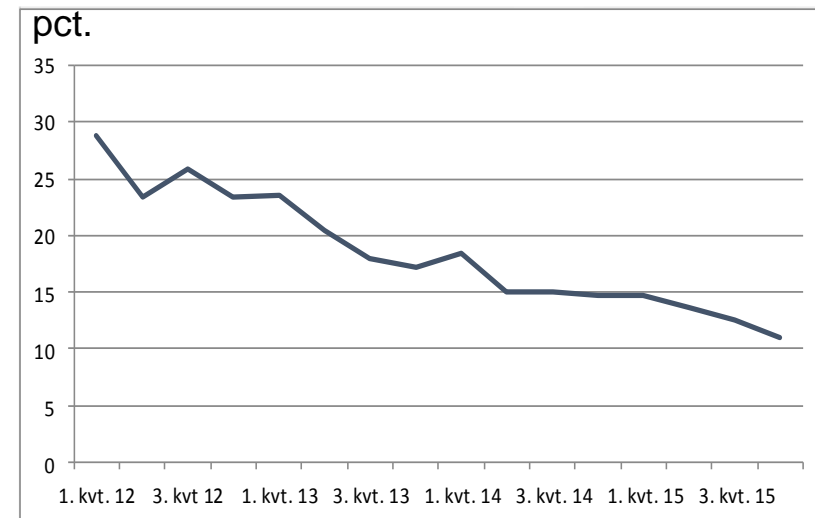
- Online casino: 96 per cent
- Betting: 89 per cent
- The payout ratio is defined as price divided with turnover.
- The average payout ratio for betting was 90 per cent in Q2 2015. In previous quarters, the average payout ratio has fluctuated between 84-91 per cent.
- The average payout ratio for online casinos has been 96 per cent in all quarters.



# Online casino games with commission

- In Q3, the share of GGR driven by online casino games with commission (online poker) fell to 11 per cent.
- Since the liberalisation the market share from poker dropped, most of which happened in 2012-2013. In Q1 2012, the share of GGR driven by online casino games with commission exceeded 30 per cent.
- In 2015, the GGR for games with commission has been relatively stable.

## The share of GGR driven by games with commission



# Users in ROFUS

- Since June 2012, a growing number of players have registered themselves in ROFUS, which is a register in which players can voluntarily exclude themselves from gambling websites.
- Mid December 2015, approx. 6,000 people were registered in ROFUS.
- Around 70 per cent have excluded themselves permanently, while the rest have excluded themselves for 1-6 months.
- More than 75 per cent of the registered users are men.
- Since June 2012, the number of registered users have increased by around 125 people each month.

